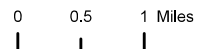
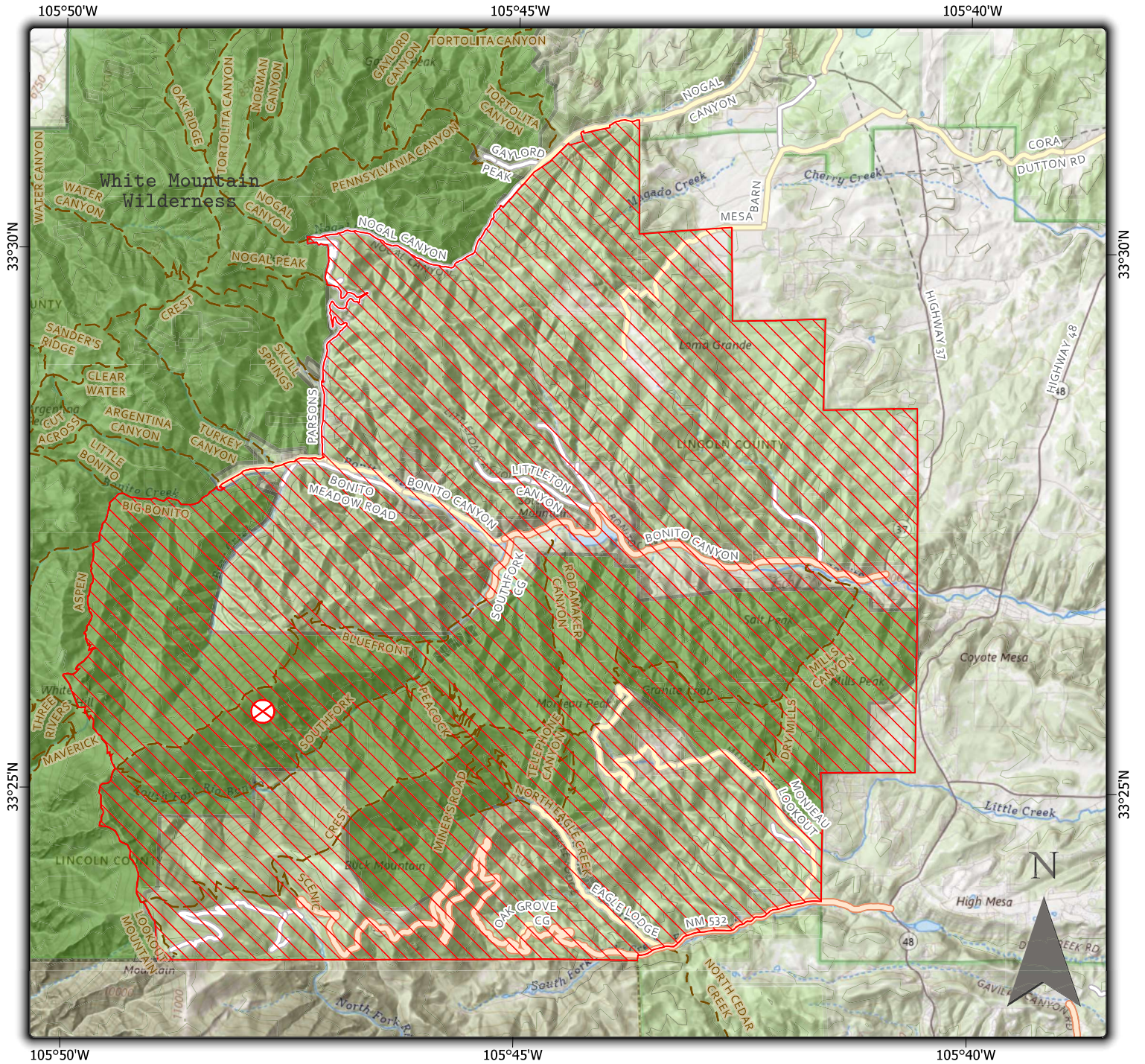


# Blue 2 Emergency Closure (Order # 03-08-01-24-002)

## Exhibit A



NAD 1983 UTM Zone 13N

**DISCLAIMER**

This product is reproduced from geospatial information prepared by the USDA Forest Service. Geospatial information and GIS product accuracy may vary. Using GIS products for purposes other than those for which they were created may yield inaccurate or misleading results. USDA Forest Service reserves the right to correct, update, modify or replace GIS products without notification.

USDA is an equal opportunity provider, employer and lender.

**Legend**

- Blue 2 Fire Point of Origin
  - Closure\_Area
  - USDA FOREST SERVICE
  - Wilderness
- Road**
- Dirt Road
  - Gravel Road
  - Paved/Gravel Road

